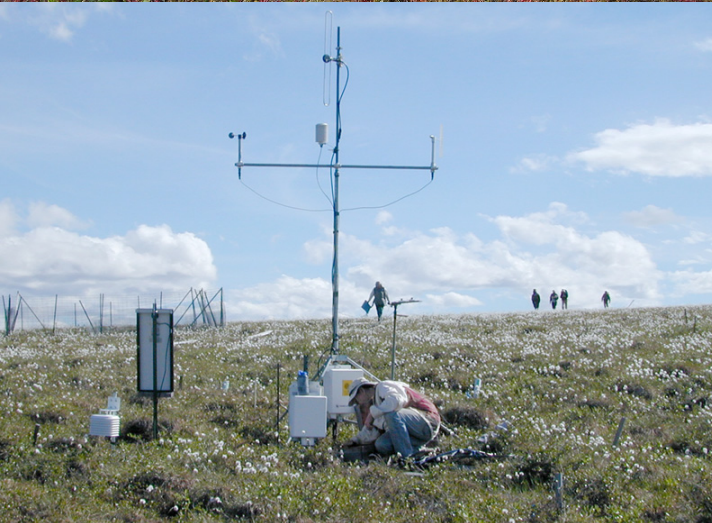
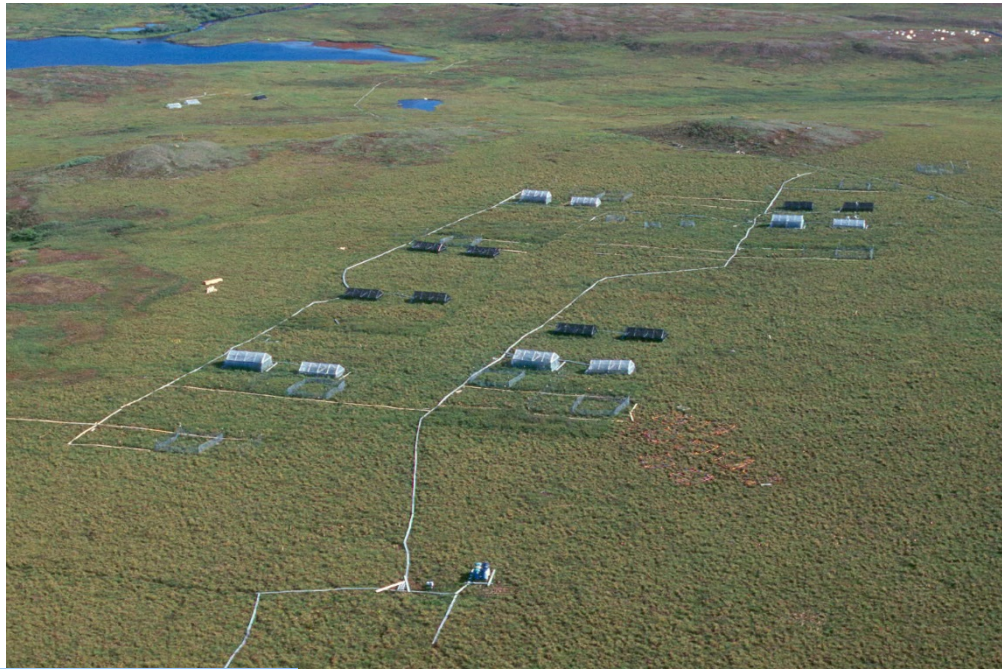


Appendix 3: Photographs of Research Sites



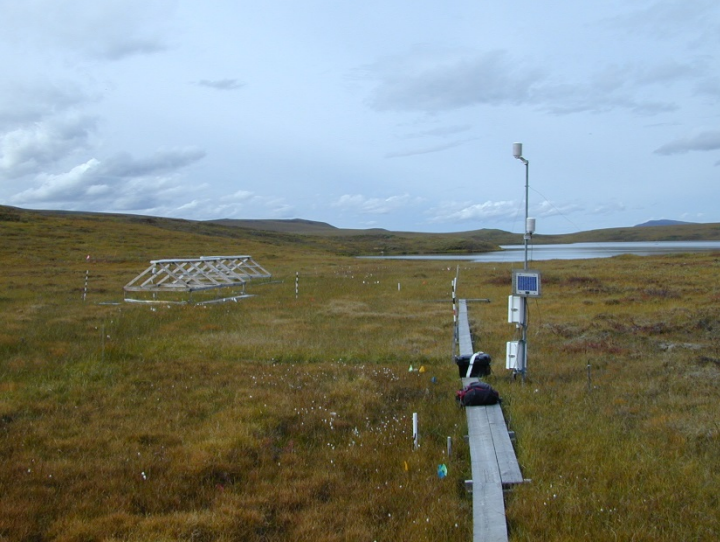
1. Aerial view looking North, Toolik Field Station in center-right

2. Overview and close up views of LTER 1989 Moist Acidic Tundra site including greenhouses, shade frames, weather station, and herbivore exclosures



3. LTER experimental plots.

Clockwise from upper right: Aerial view of Nonacidic tundra site; Aerial view of Wet Sedge site blocks 2 and 3; Shrub site Block 1; Wet Sedge site Block 1; Heath Site

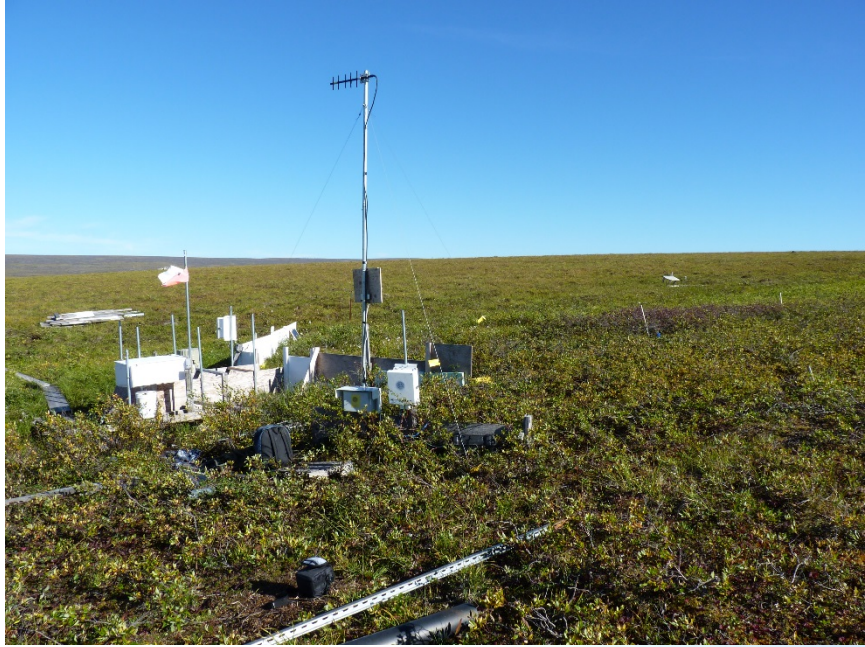




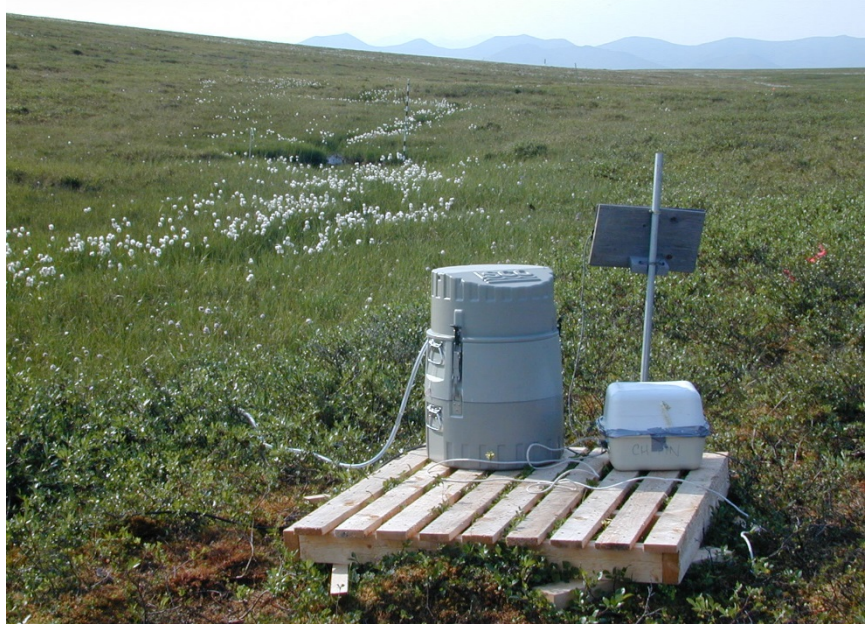
4. Aerial view of 2006
 Low-level fertilizer
 plots and 1995 Snow
 fence plots in Tussock
 tundra and heath
 tundra (above);
 closeup view of 1995
 Tussock Tundra
 snowfence and open-
 top chambers (below)



5. Top: Tussock watershed, weir, and weather station.



Middle and
Bottom:
Autosampler and
weir in Imnavait
Creek watershed.





6. Eddy Flux tower systems in operation on Toolik Lake (top) and in a terrestrial wet fen system (bottom)



7. Stream Drippers

Small (Downstream) Dripper location



Larger (upstream) dripper location



9. Typical stage height installation (white vertical PVC tube in center) with YSI sonde (underwater in foreground) and light meter (blue cylinder in background)



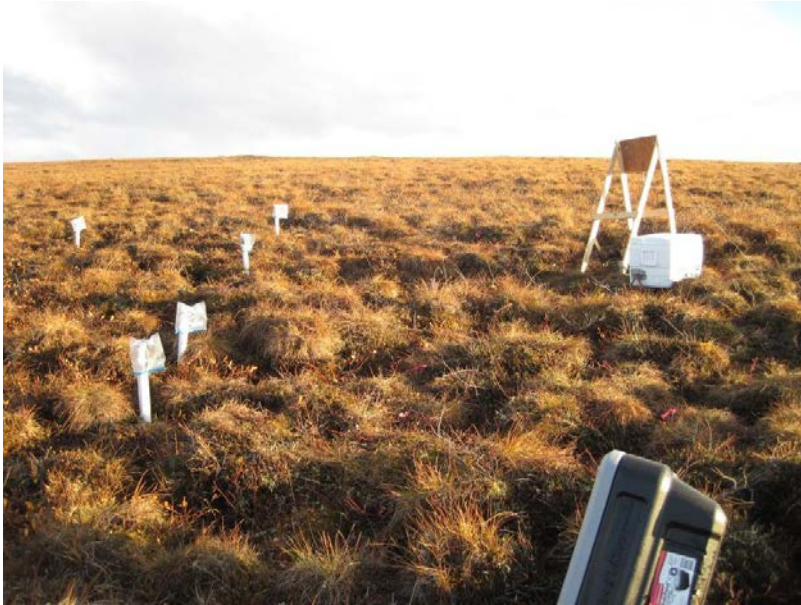
10. Typical protect pipe for overwintering HOBO stage recorder



11. YSI sonde installation



12. Typical Soil Moisture Installation associated with some met stations



13. Typical Datalogging Thermistor set up



14. Typical Met Station installation



15. Typical Game Camera Installation



16. Typical fish antenna installation

